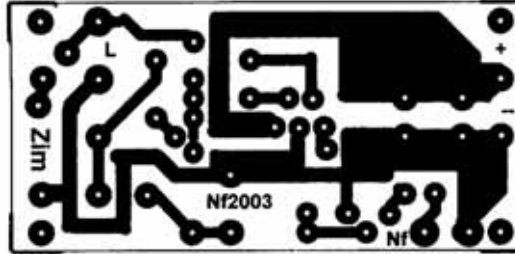


# Back to the roots (Teil 3)

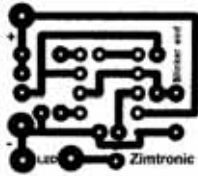
Beschreibung der Schaltungen, des Aufbaus sowie die kompletten Stücklisten in MODELLWERFT 10/2005



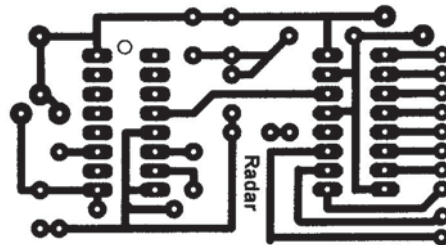
Aufwärtswandler



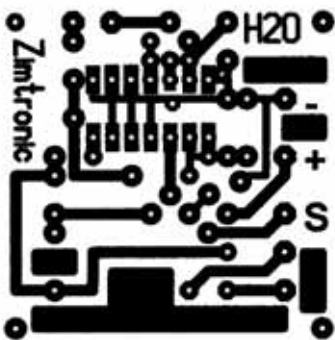
Nf-Verstärker 6V



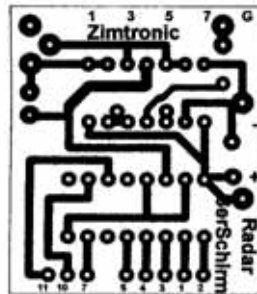
Blinker (einfach)



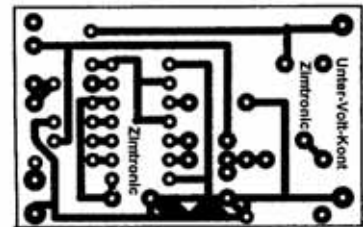
10er Radarbildschirm



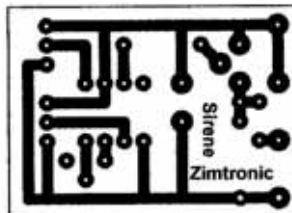
H<sub>2</sub>O-Sensor



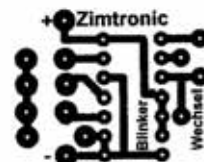
8er Radarbildschirm



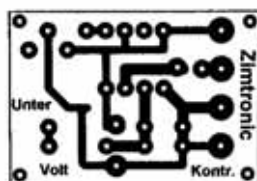
Untervolt-Kontrolle



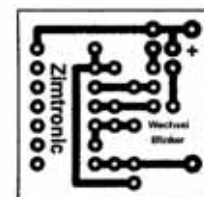
Sirenentreiber



Wechselblinker mit C-MOS IC



Unterspannungsanzeige per Blink-LED



Wechselblinker Ast