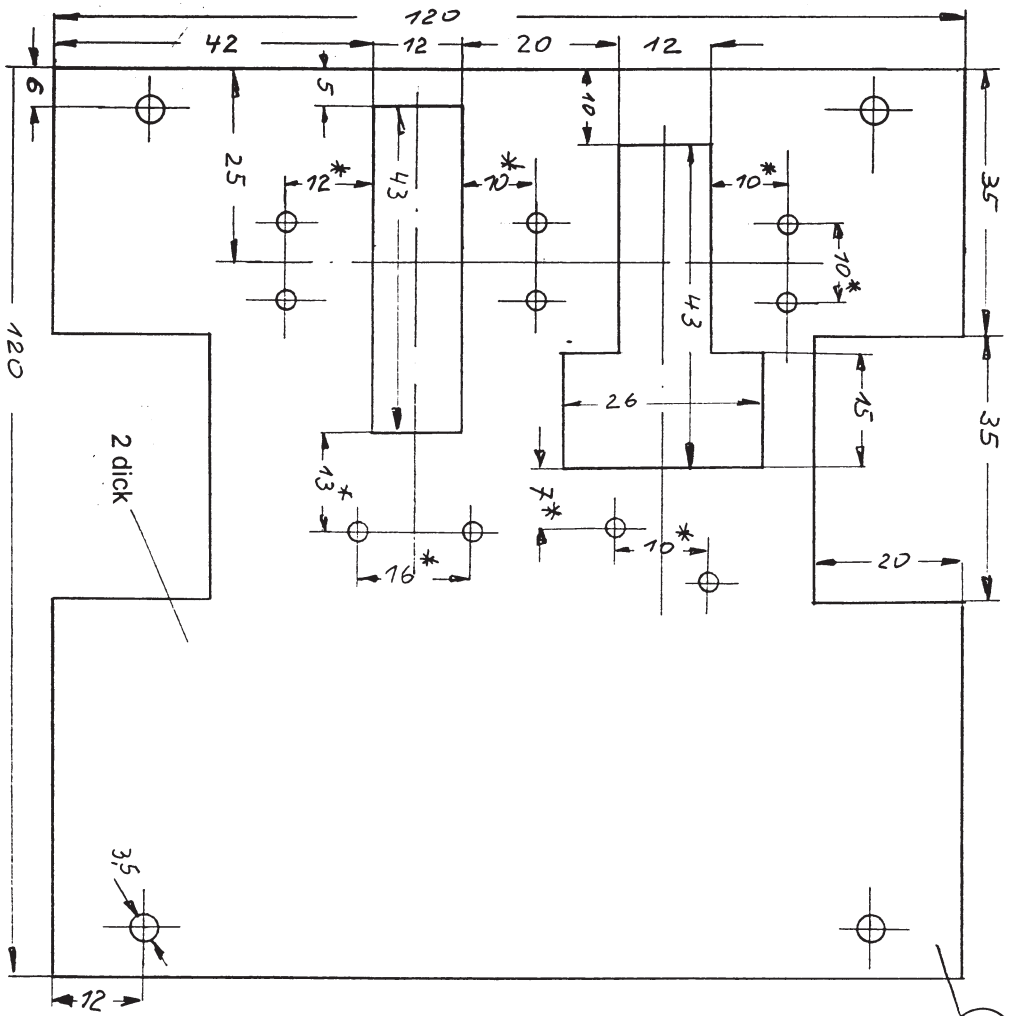


Maßstab 1:1  
Blatt 8 von 30

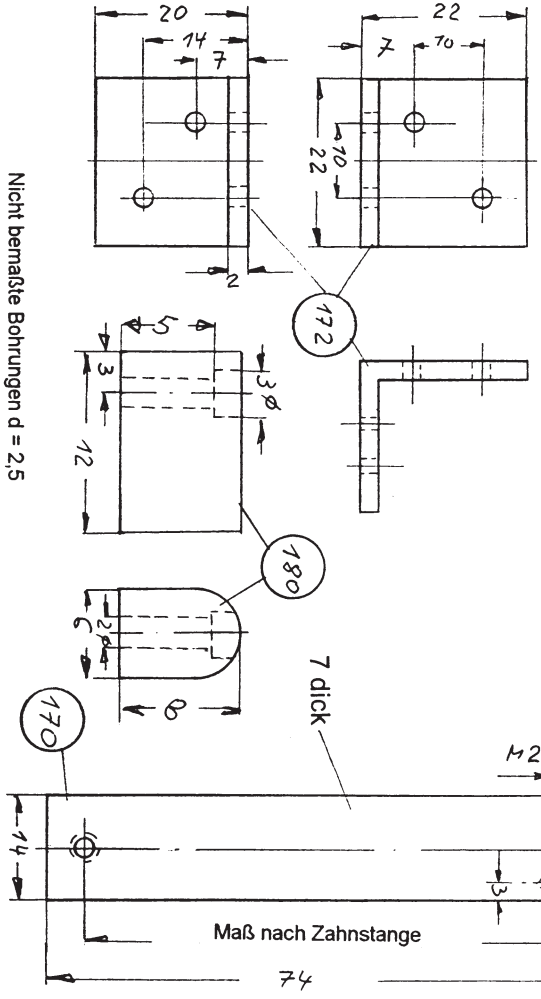
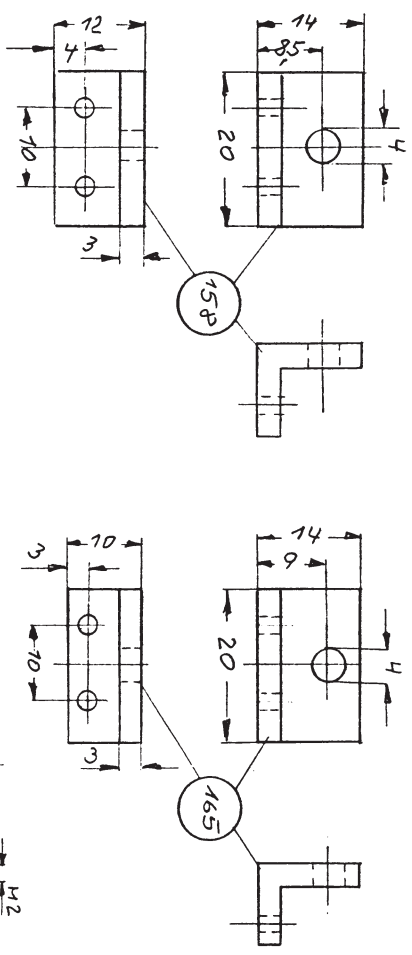
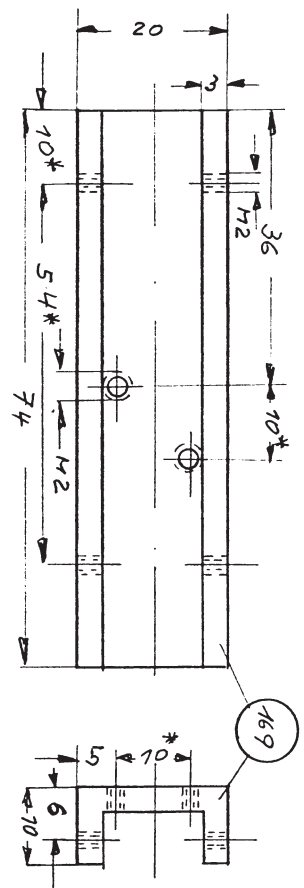
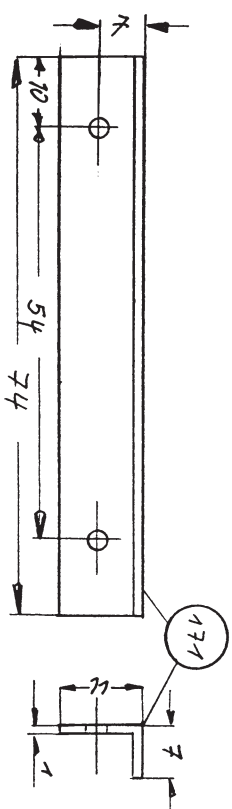
Grundplatte Antriebseinheit, Querantrieb Einzelteile

Gez. Till  
Datum 22.01.2006

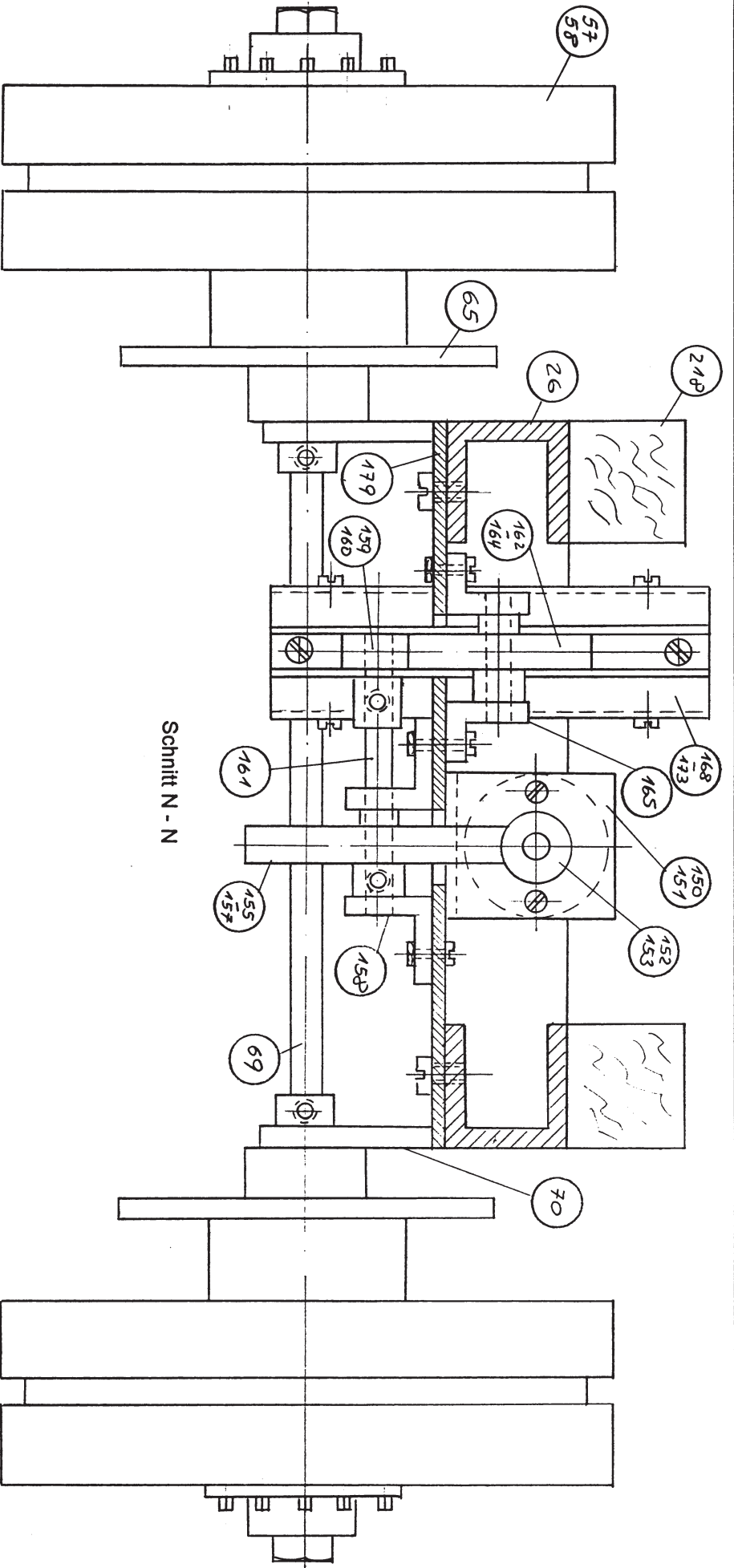




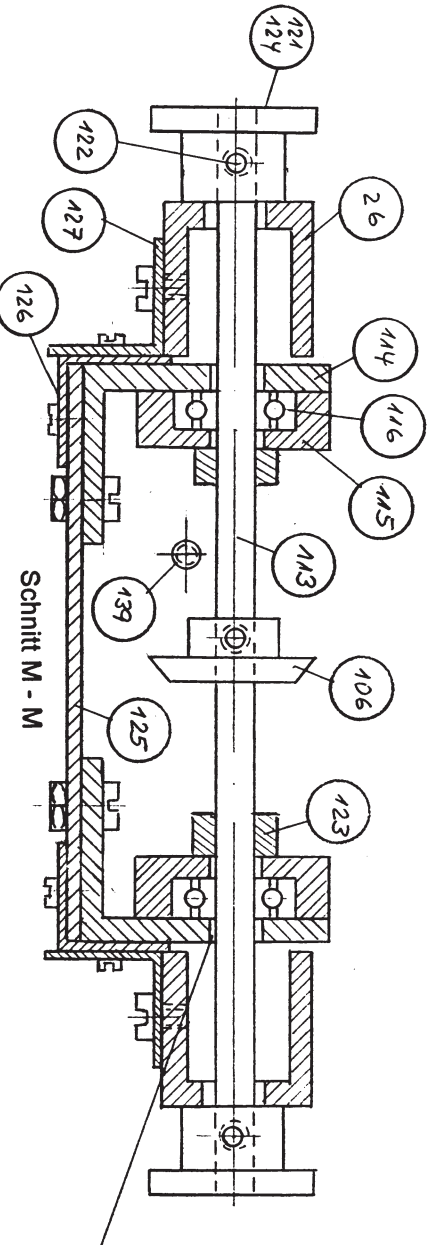
\* Bohrungen nach Anrits der  
Gegenstücke Bohren



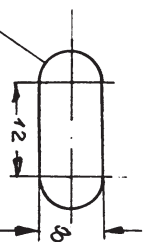
Nicht benetzte Bohrungen d = 2,5



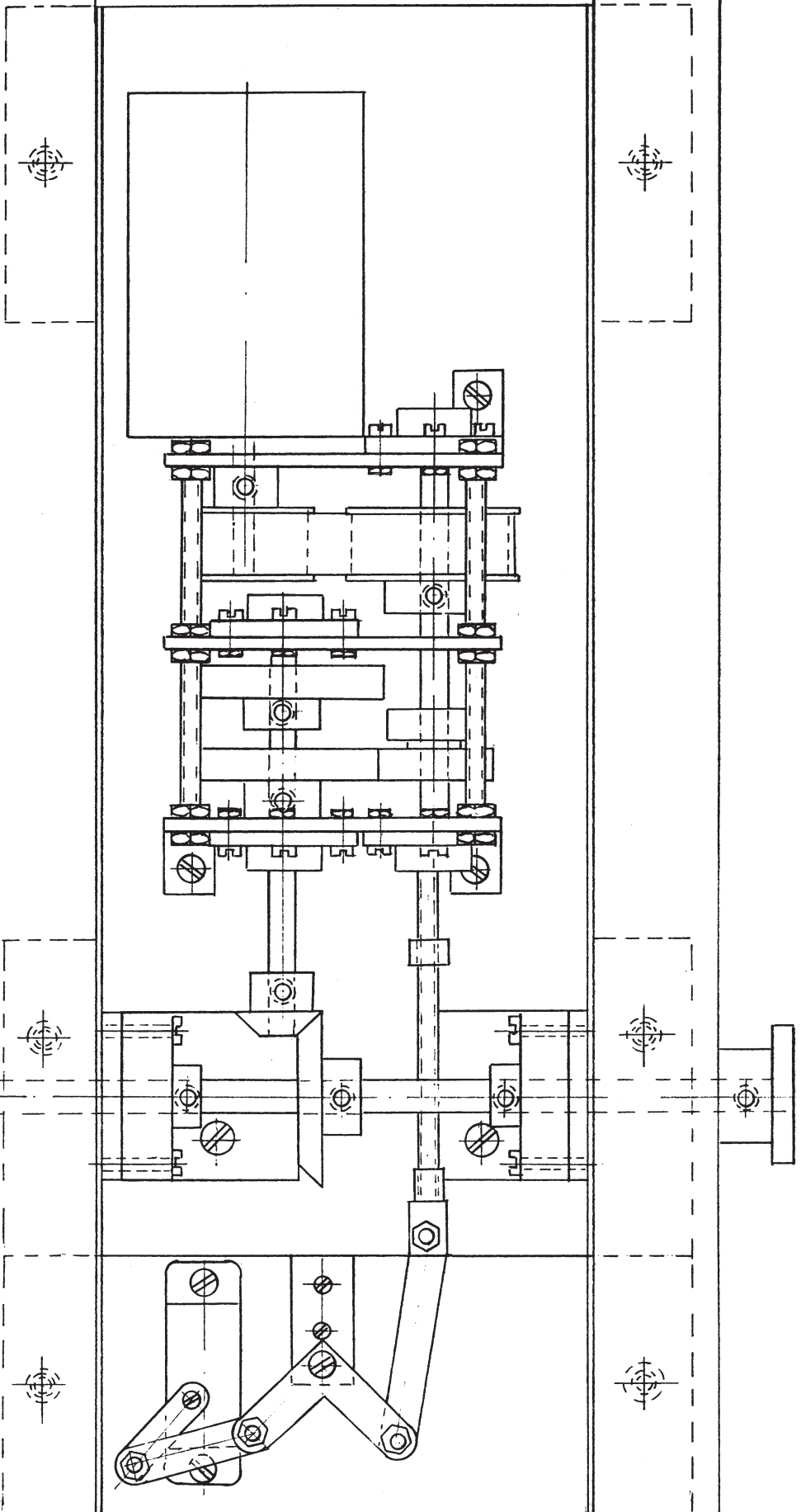
Schnitt N - N



Schnitt M - M



Der Rahmen Teil 26 erhält rechts und links Langlöcher (ca. 120 mm von der Hinterachse) zur Durchführung der Welle und zum Spannen der Ketten



Motor

Getriebe

Quertrieb

Servoschaltung Getriebe

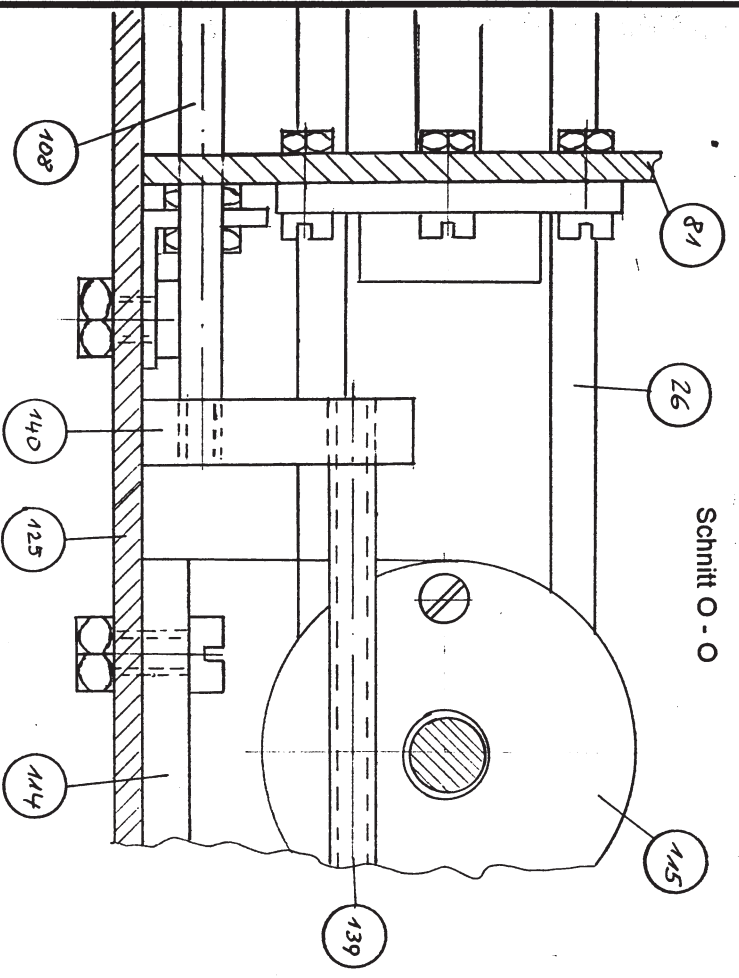
Maßstab 1 : 1

Blatt 12 von 30

Antriebseinheit, Quertrieb, Servoschaltung Getriebe Draufsicht

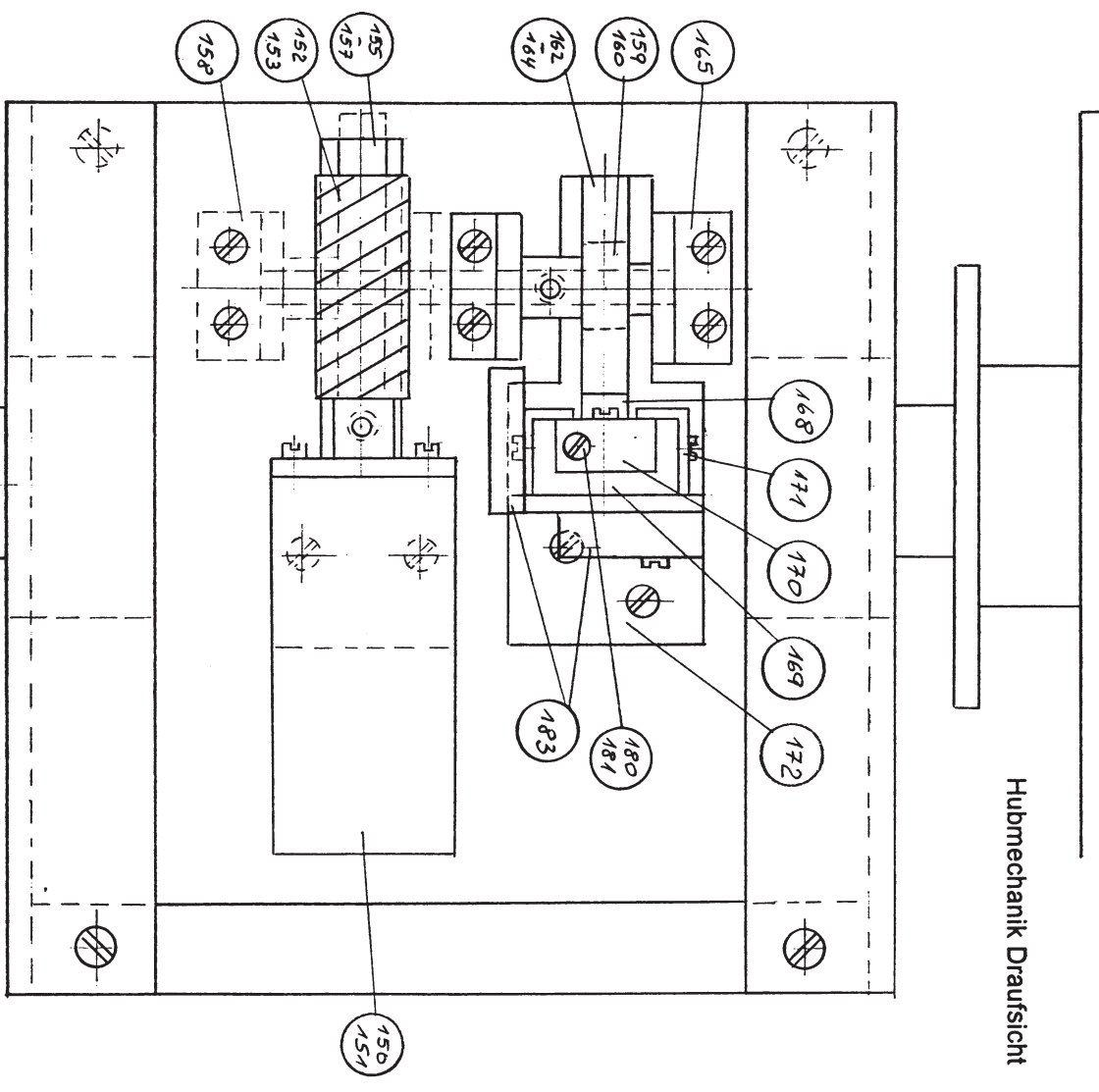
Gez. Till

Datum 22.01.2006



Schnitt O - O

Servoschaltung Getriebe Einzelheit

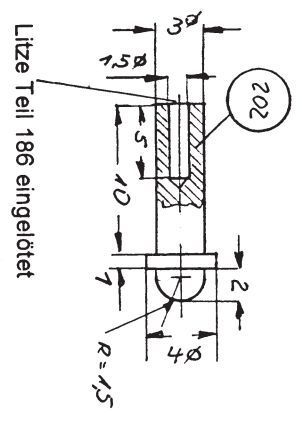
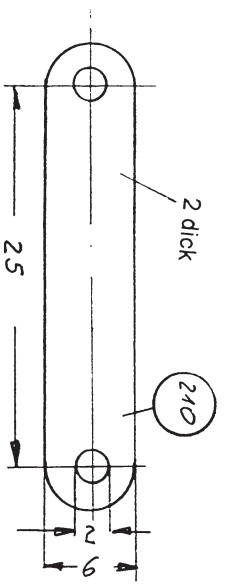
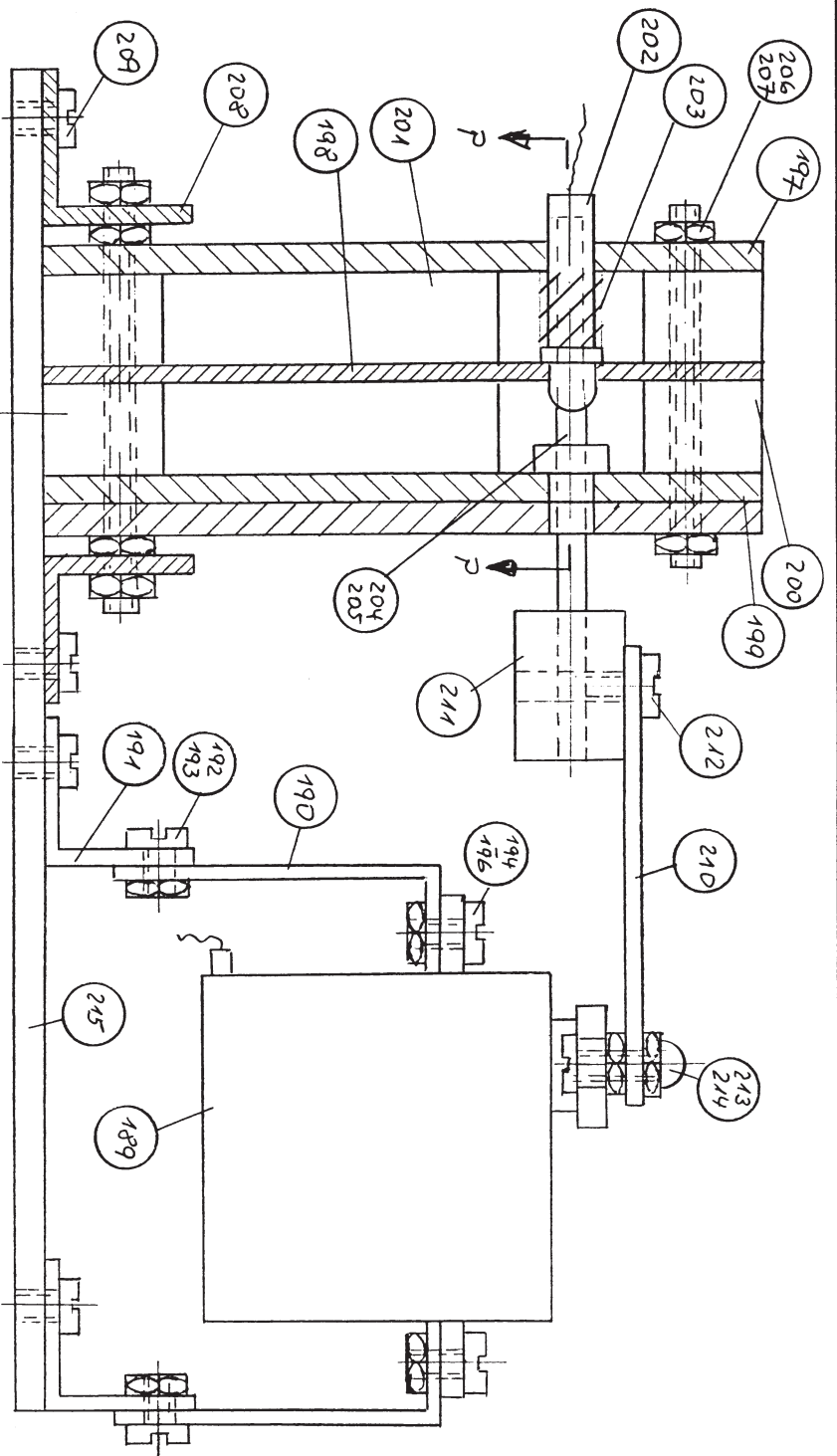


Hubmechanik Draufsicht

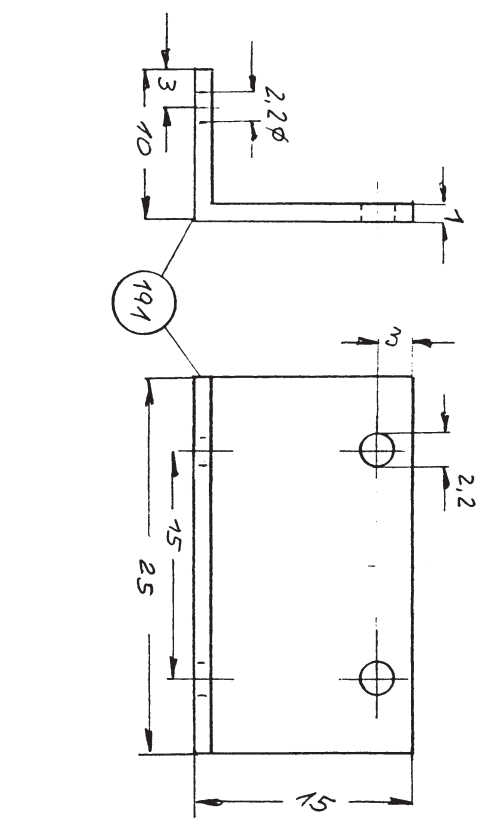
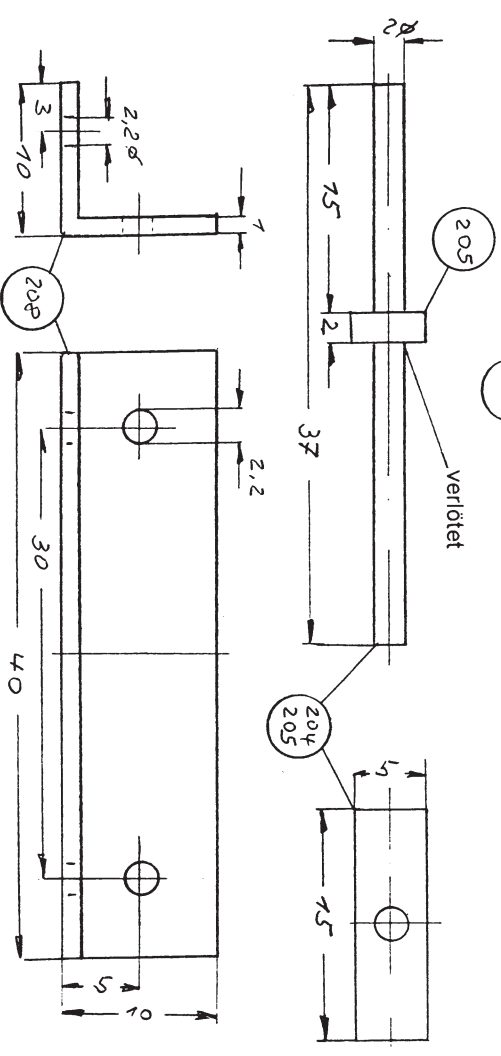
Maßstab 1:1  
Blatt 13 von 30

Hubmechanik Draufsicht, Servoschaltung Getriebe Einzelheit

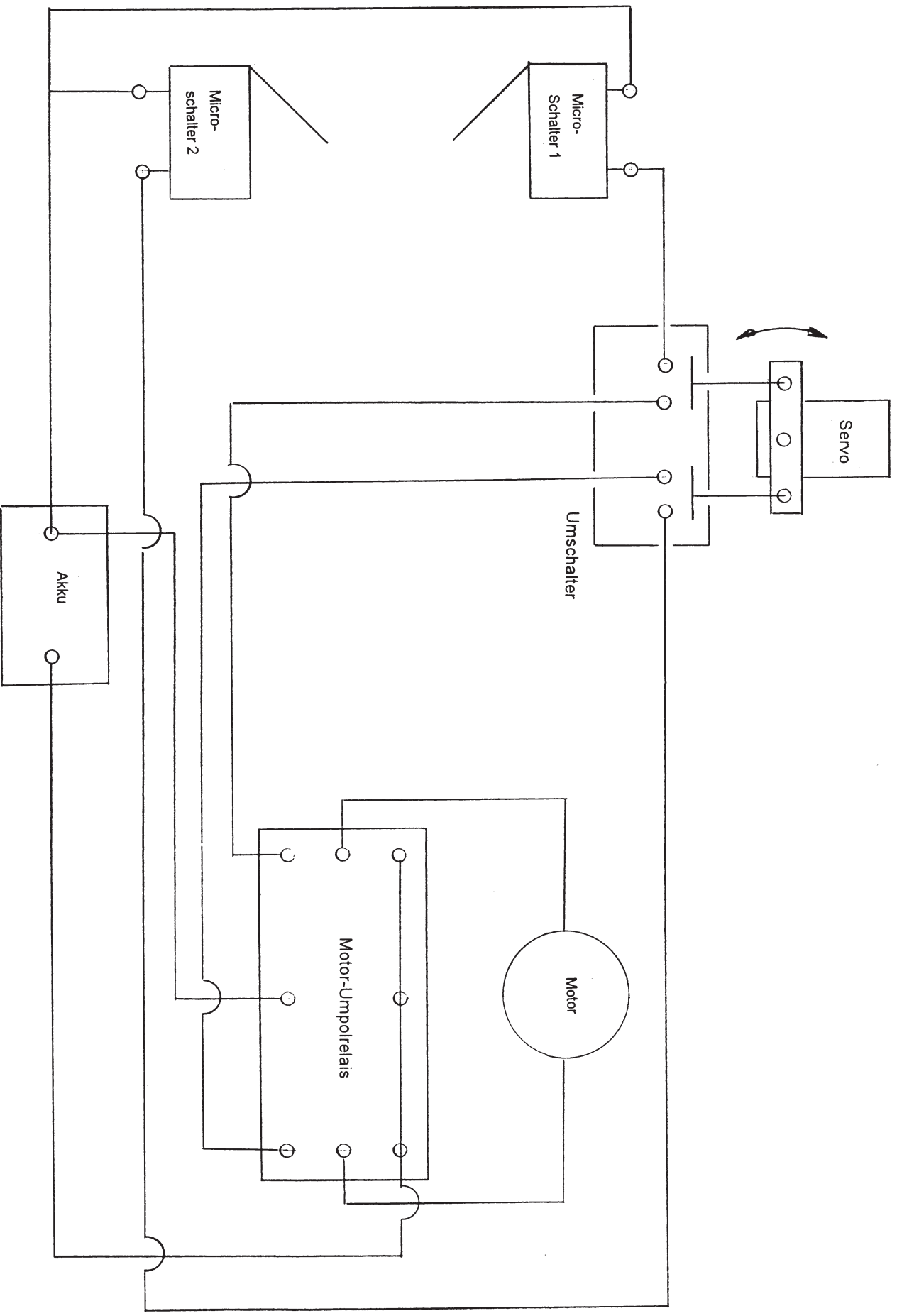
Gez. Till  
Datum 22.01.2006



Schnitt S-S



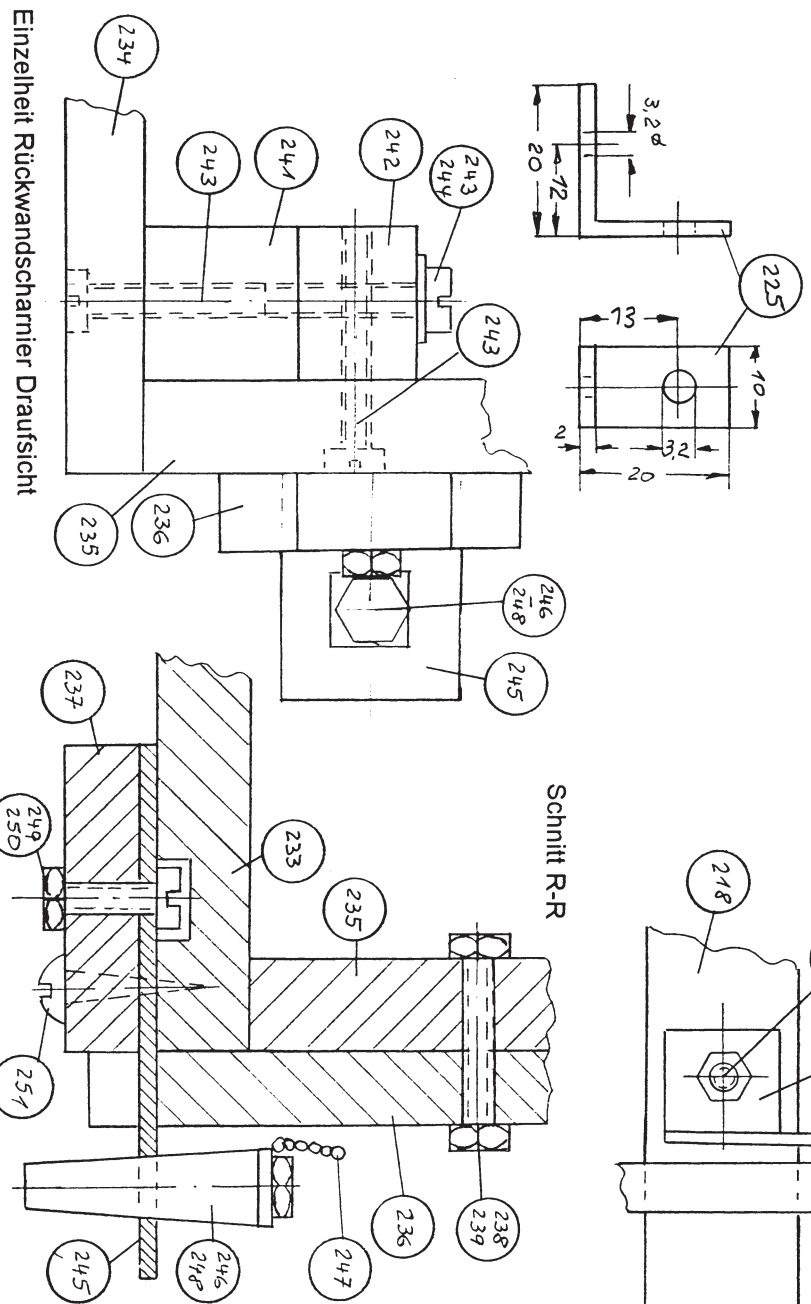
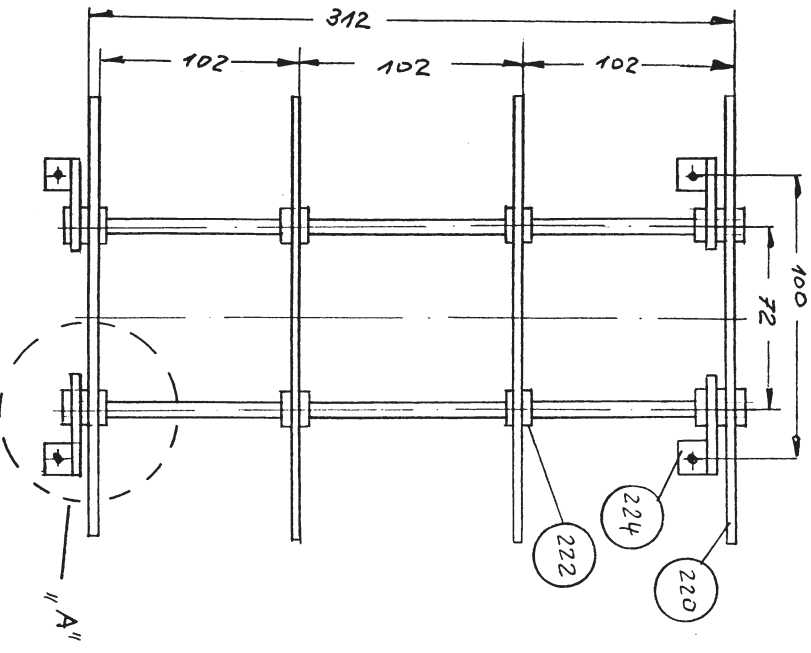
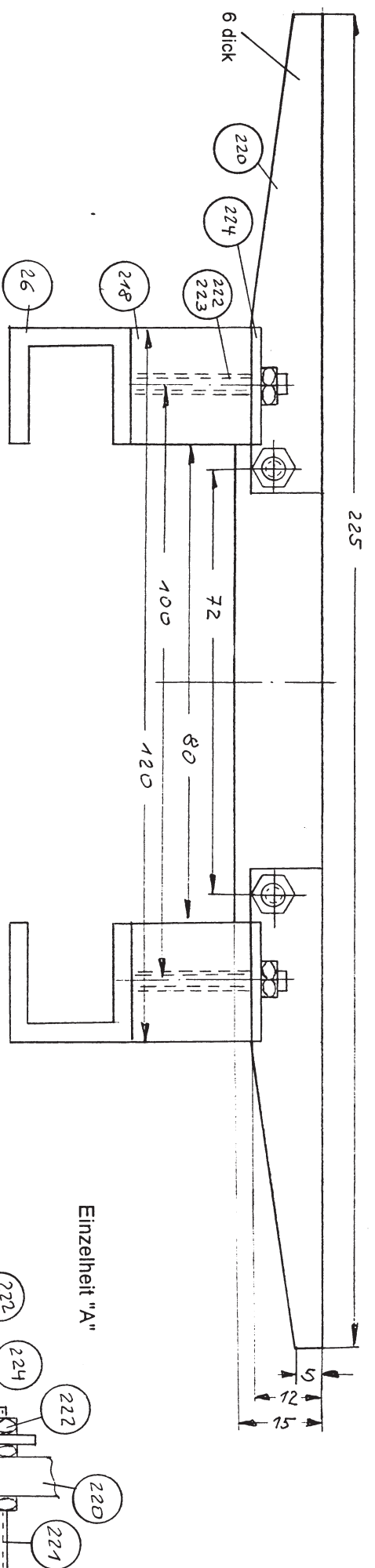




Maßstab 1:1  
 Blatt 1/2 von 3/2

Hubelektrik

Gez. Till  
 Datum 22.03.2006

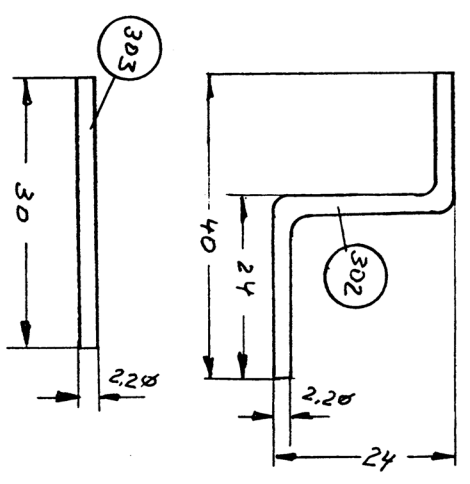
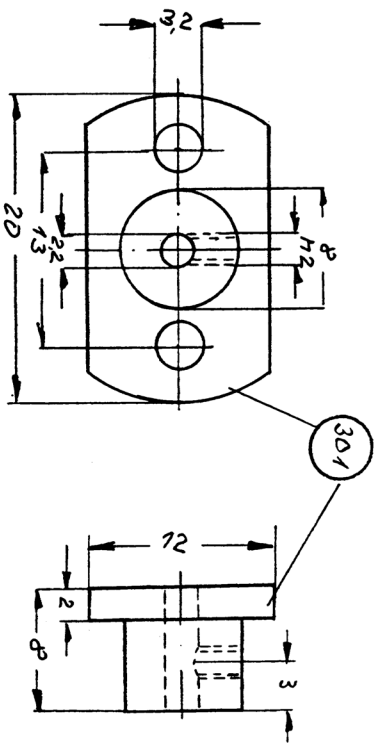
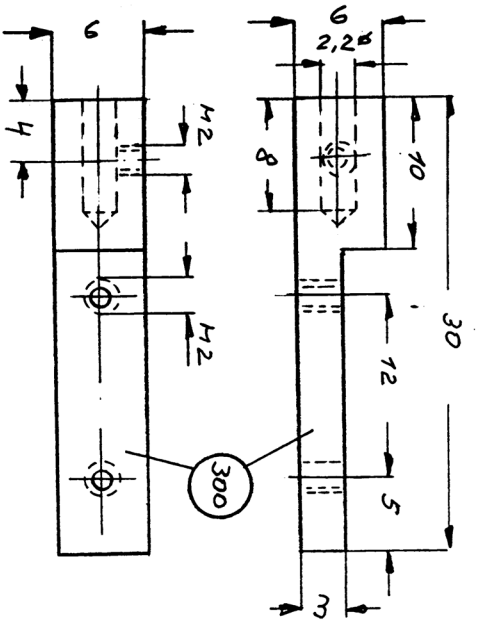
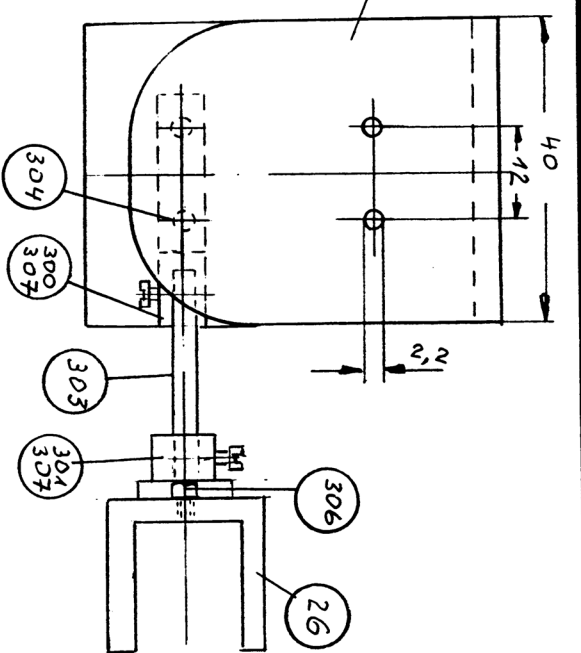
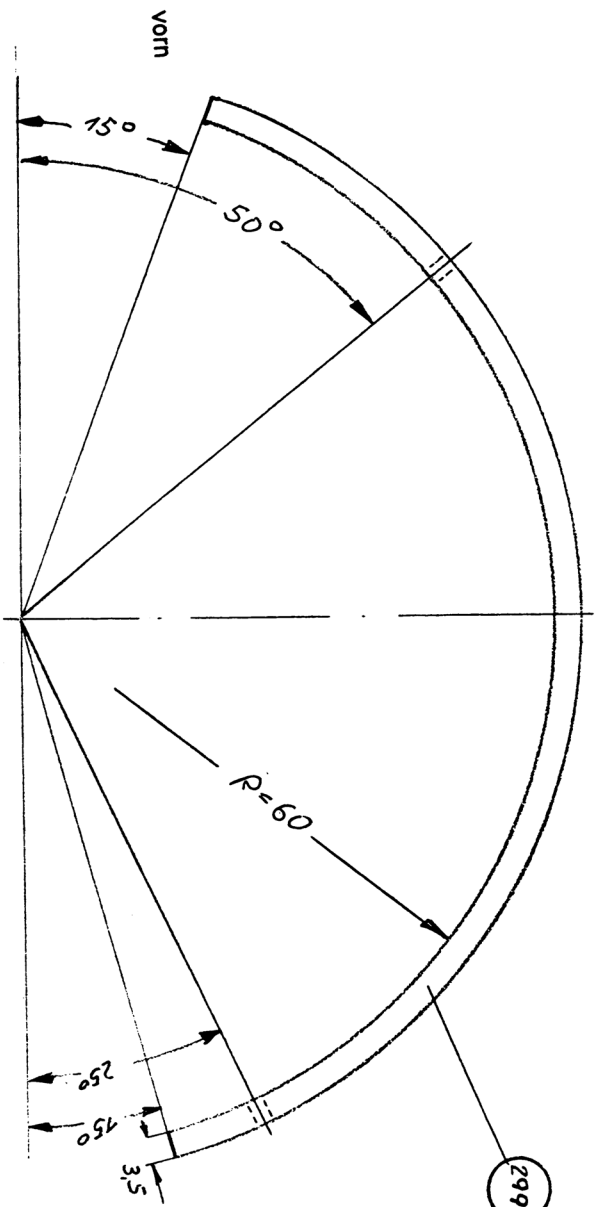


Maßstab 1:1, 2:1, ...  
Blatt 8 von 30

Aufbauen, Querträger und Einzelheiten  
Gez. Till  
Datum 31.03.2006



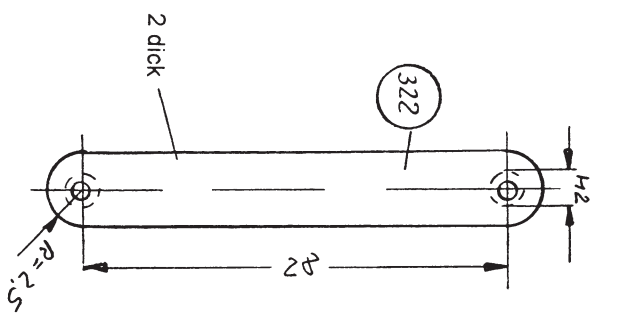
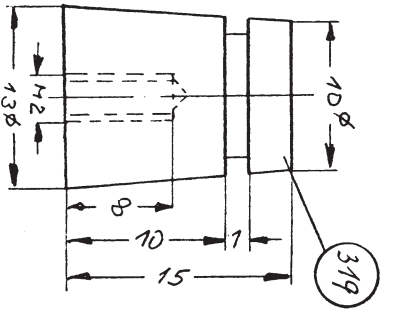
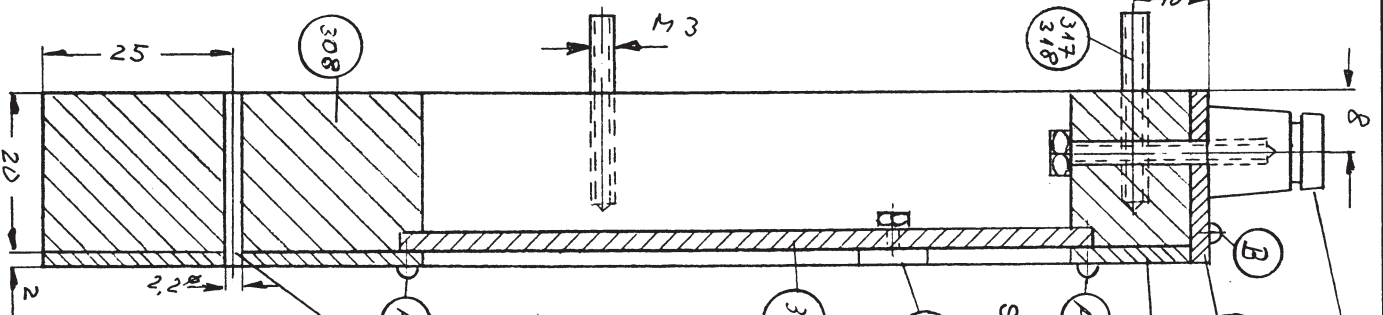
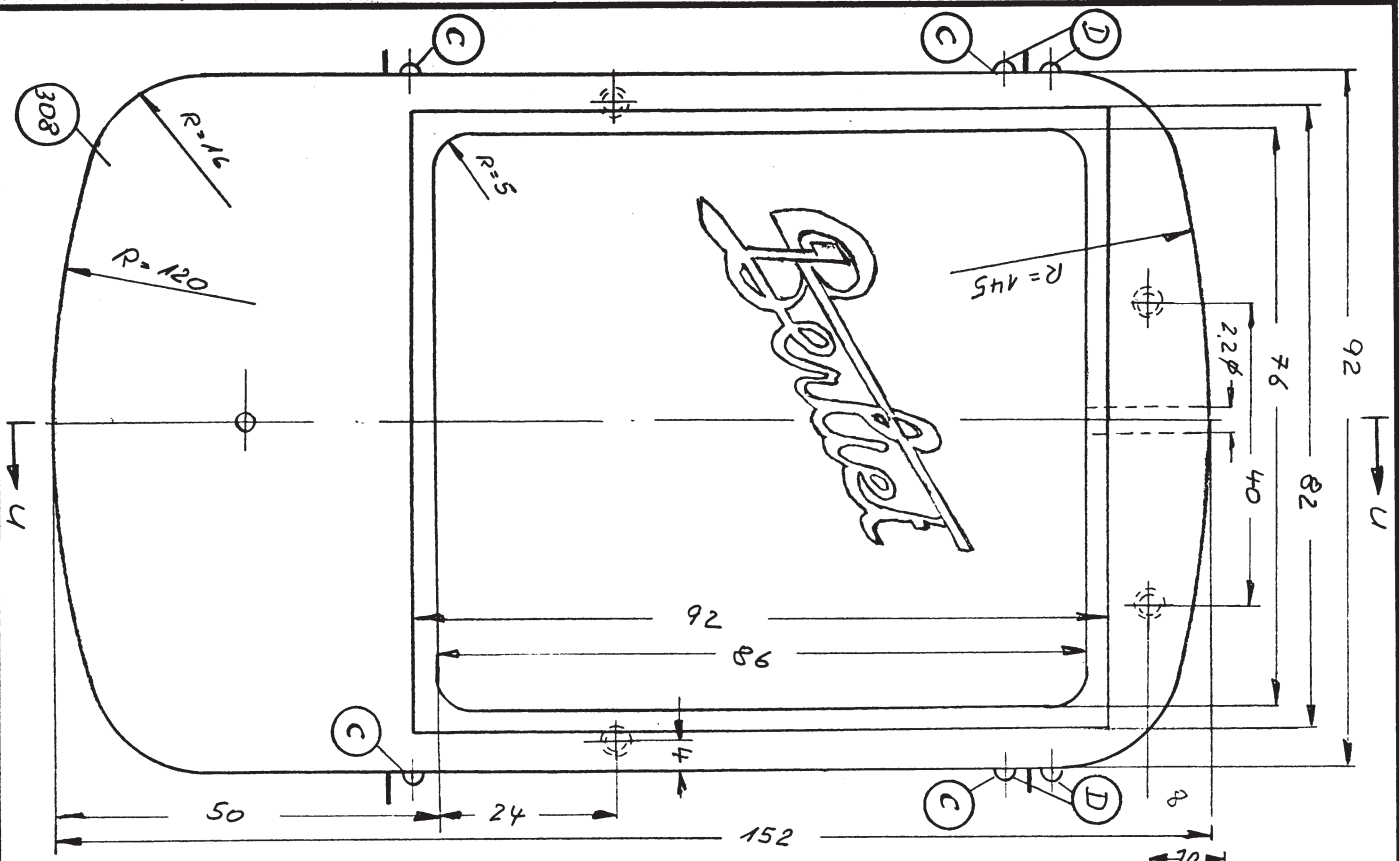




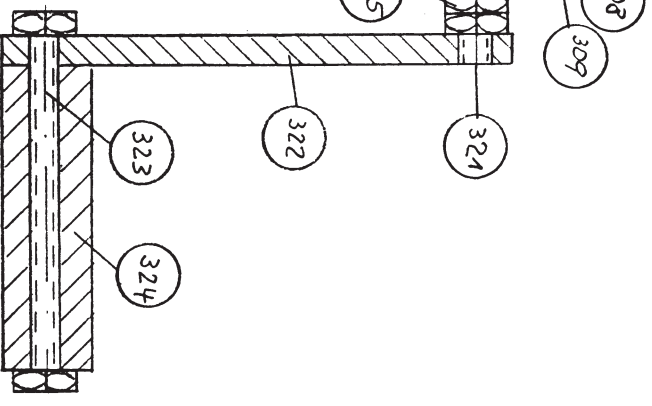
Maßstab 1:1, 2:1  
Blatt 22 von 30

Kotflügel

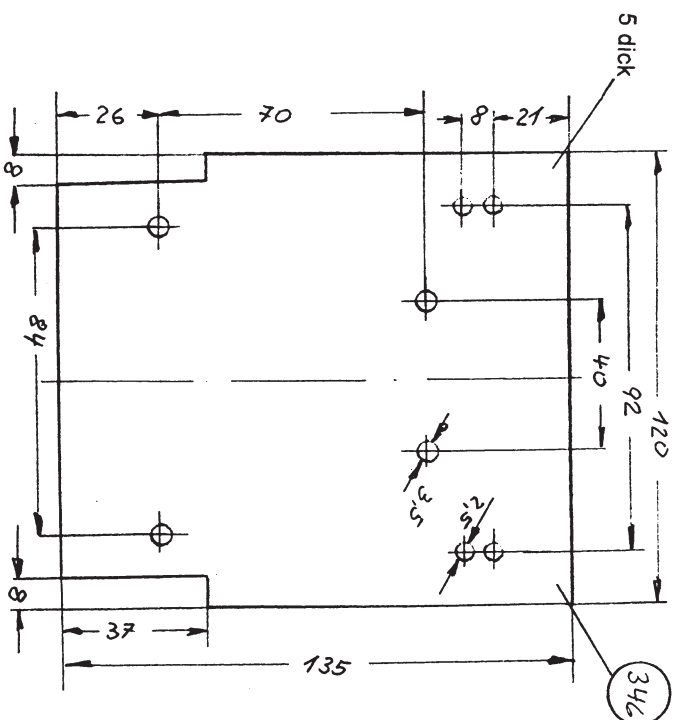
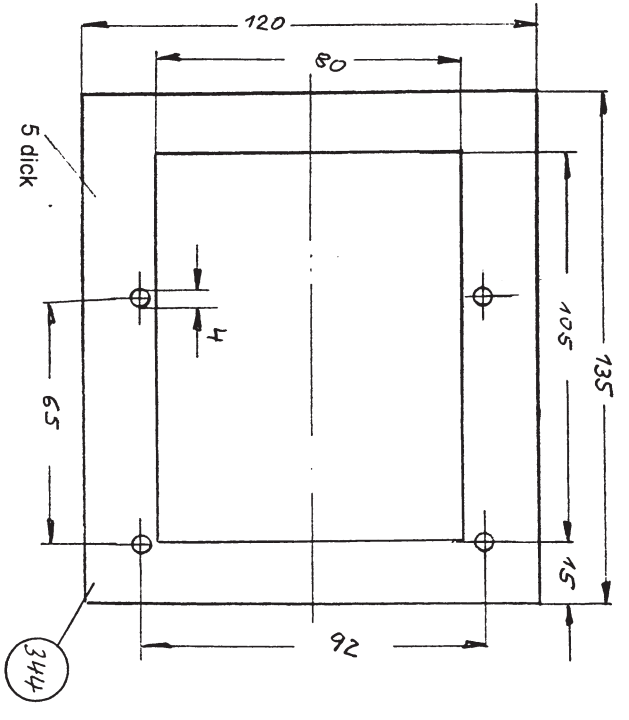
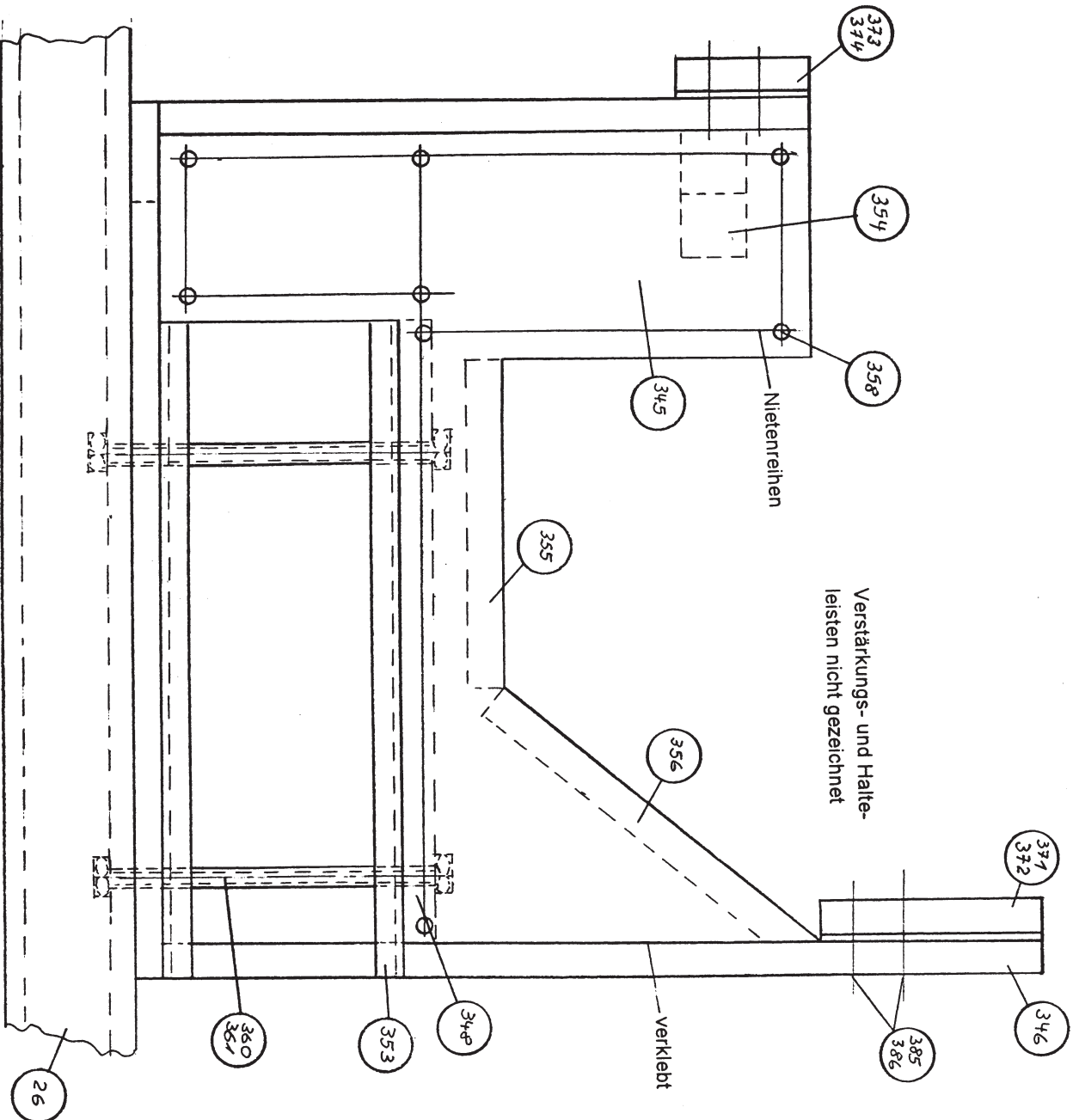
Gez. Till  
Datum 14.05. 2006



- Nieten
- A Front 2 Reihen je 14 Stück
  - B Oben 1 Reihe 20 Stück je
  - C Seiten senkrecht je 1 Reihe rechts und links je 13 Stück
  - D Seiten waagrecht je 2 Reihen rechts und links je 2 Stück



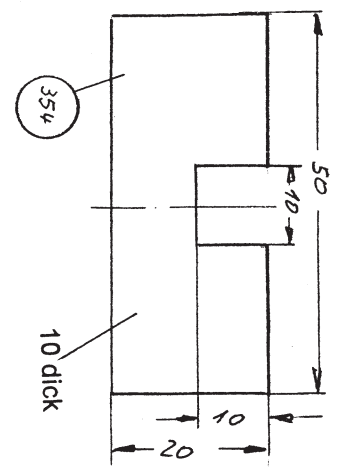
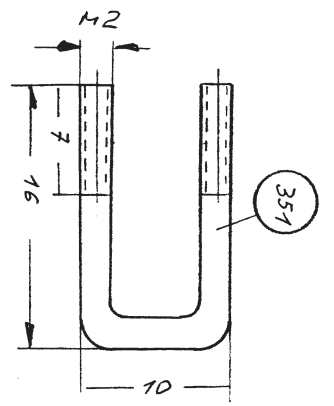
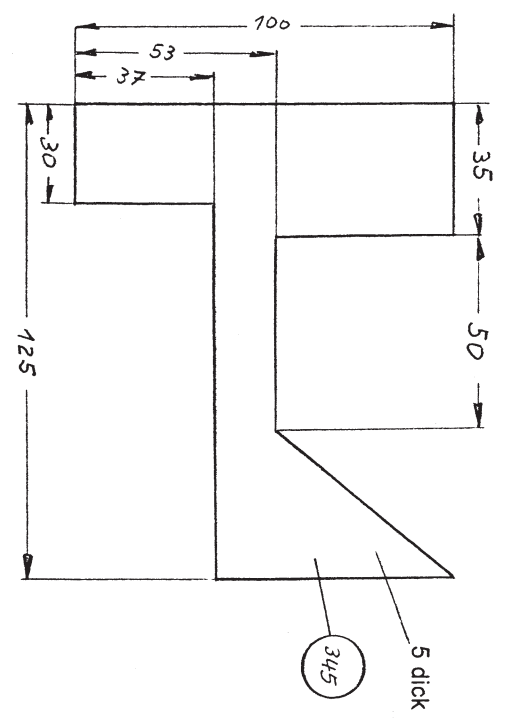
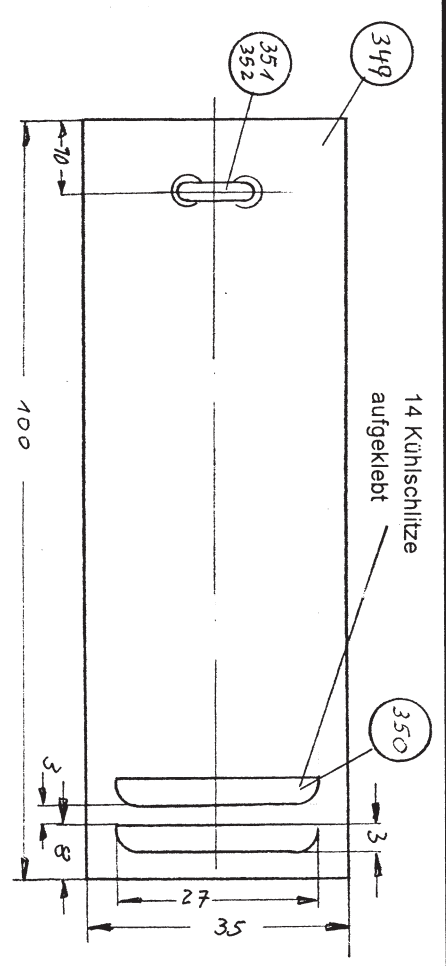
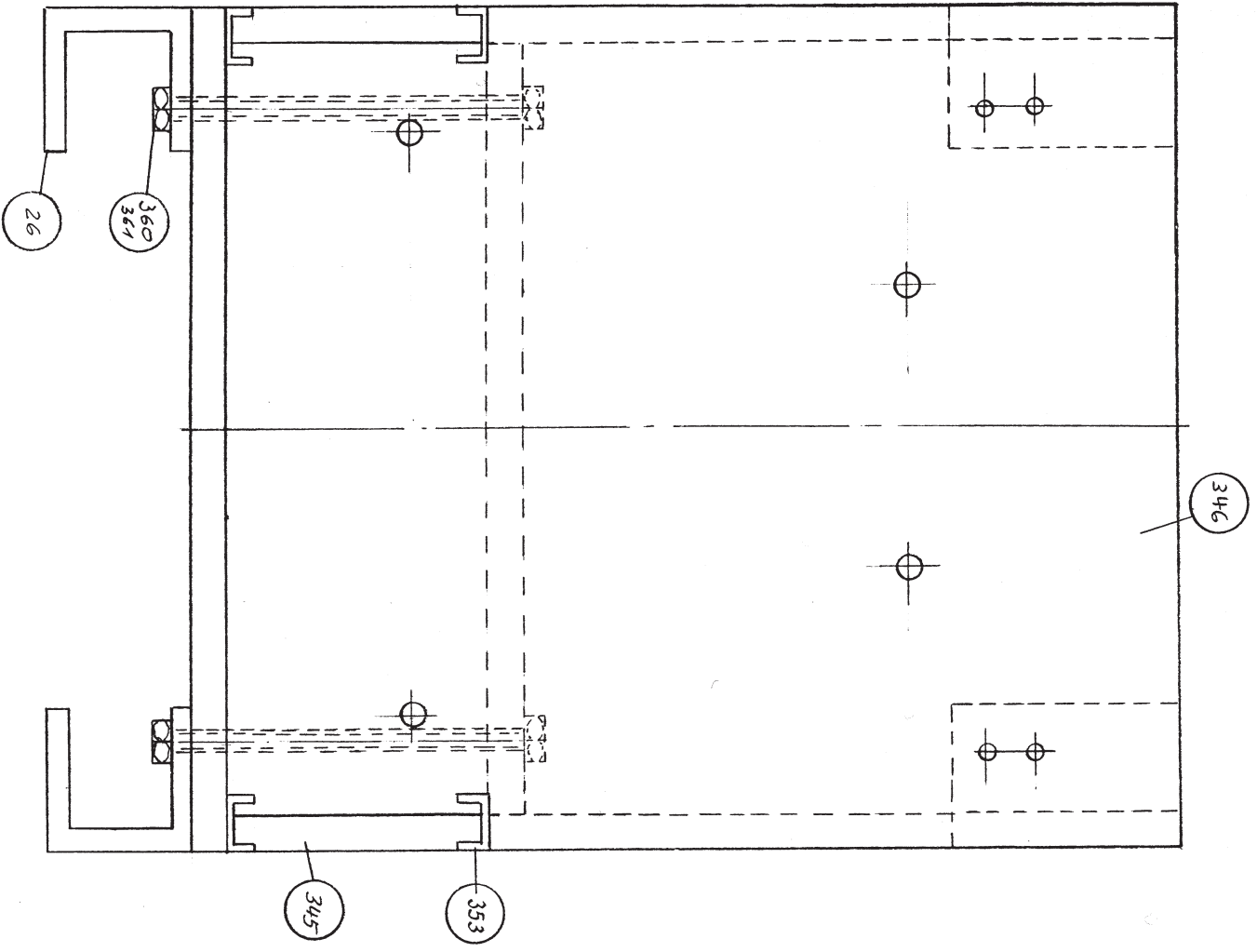


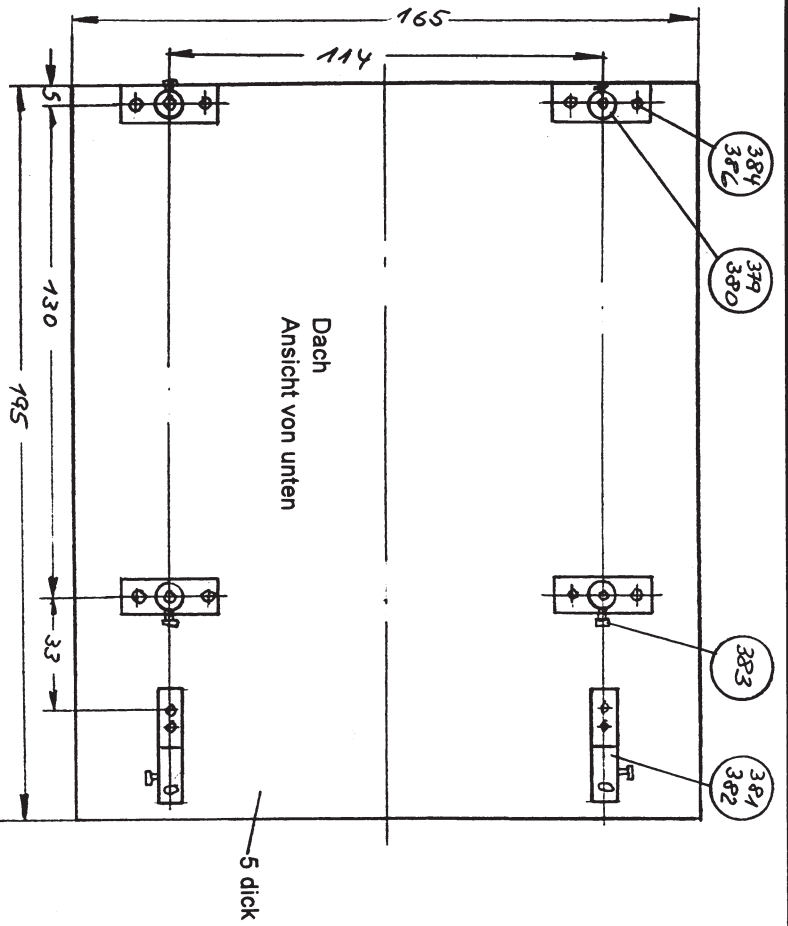


Maßstab 1:1, 1:2  
Blatt 25 von 32

Fahrerhaus, Seitenansicht und Einzelteile

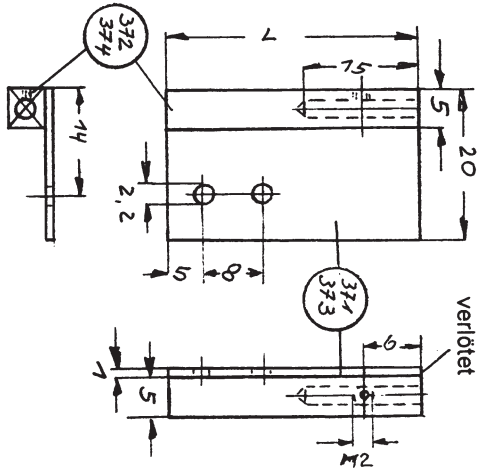
Gez. Till  
Datum 18.05.2006



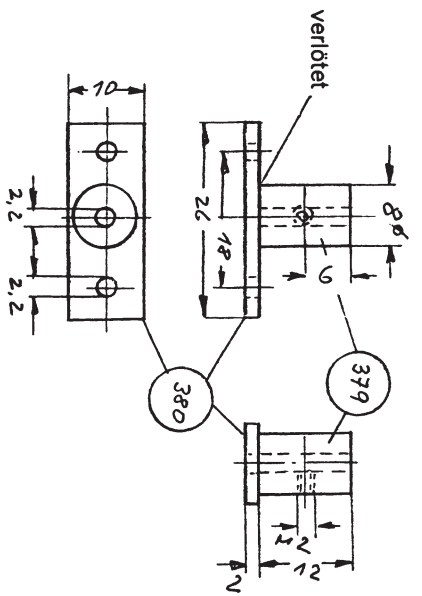


Dach  
Ansicht von unten

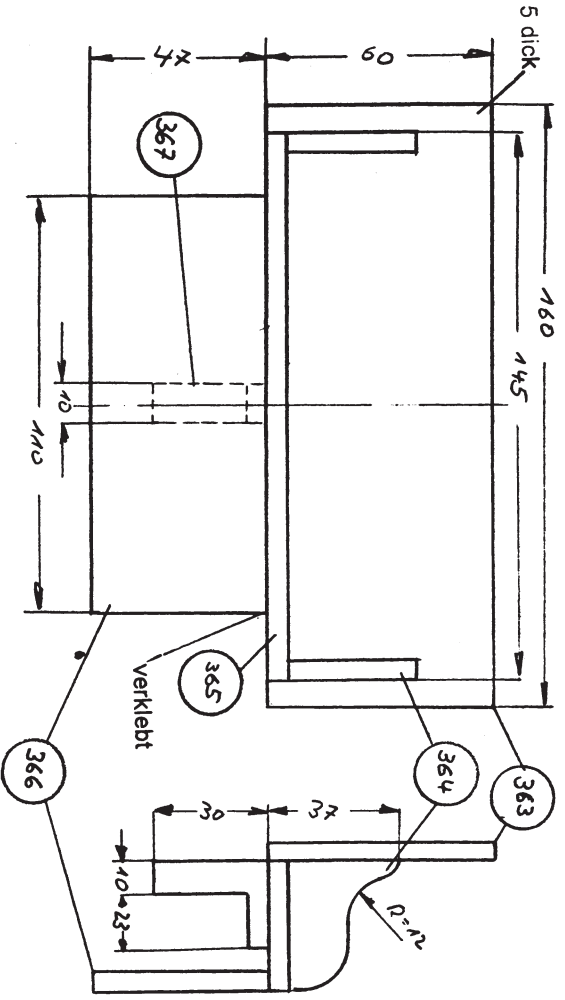
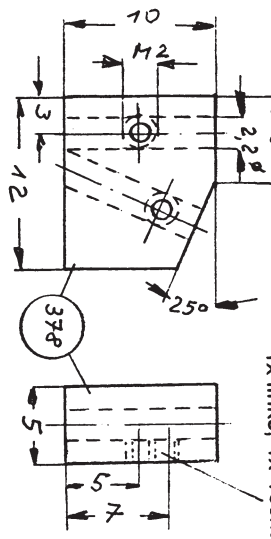
5 dick



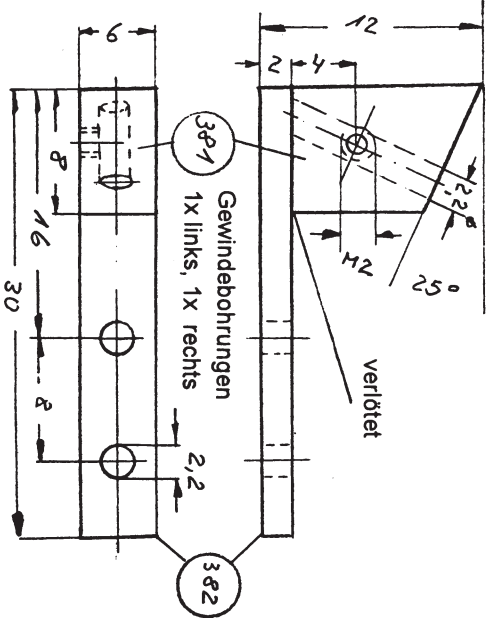
Teil 371/372 | = 34  
Teil 371/372 | = 28  
Ausführung  
1x links, 1x rechts



Gewindebohrungen  
1x links, 1x rechts

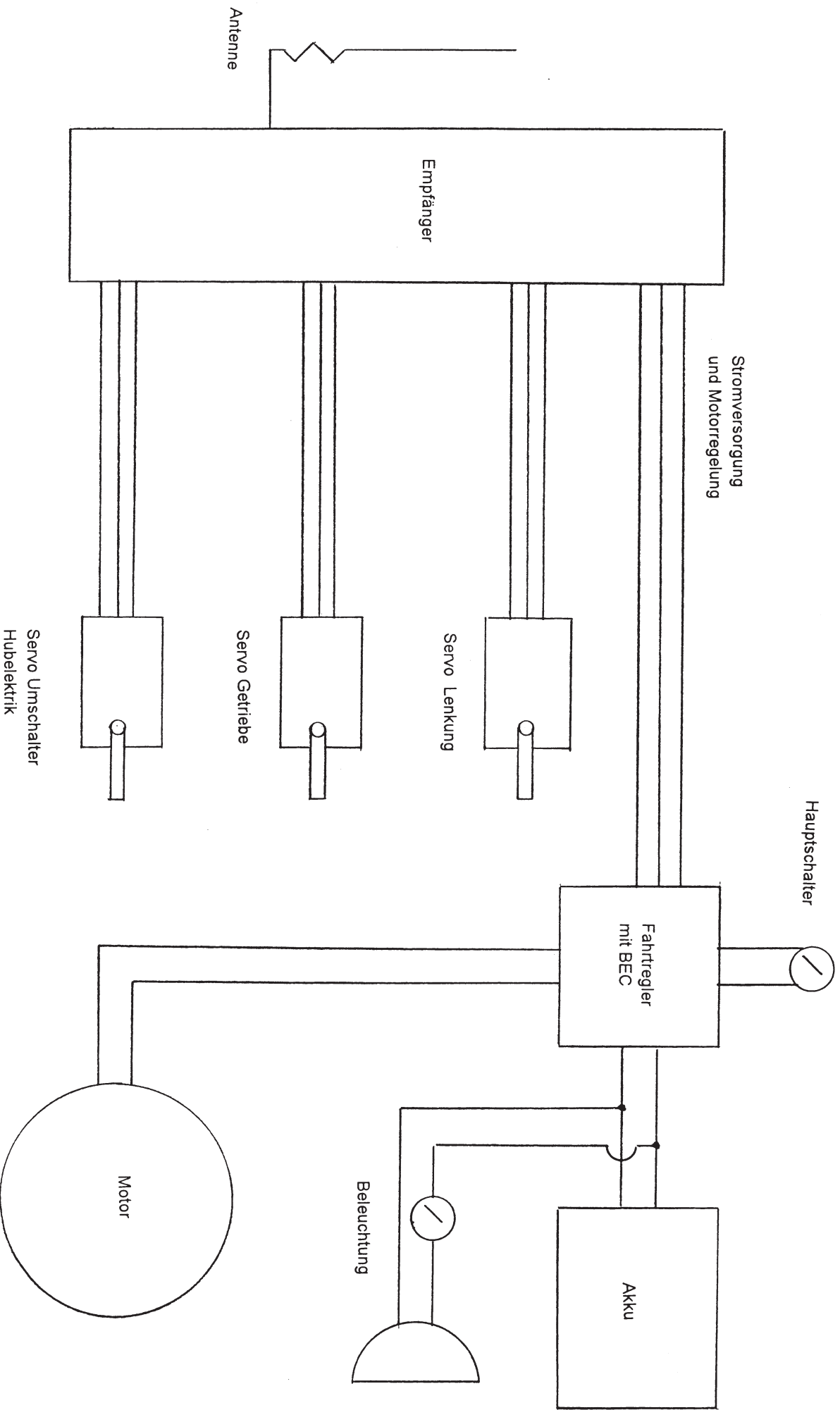


verklebt



Gewindebohrungen  
1x links, 1x rechts

verklebt



**Berliet Cat**

Baujahr 1911  
Frontansicht

Gez. Till

Datum 09.07.2006

